

DOOR HARDWARE

ENVIROLINE® SERIES HANDLES

Designed for use in the Enviroline® Series enclosures, for a quick and easy conversion from the standard quarter turn latch, with no added holes or cutouts necessary for installation. Single-Point Cam included. Not recommended for use on enclosures greater than 36" in height.

Catalog No.	Description	Qty. Per Kit	Product Code
SCE-ELKL	Keylocking Handle	1	P2
SCE-ELPL	Padlocking Handle	1	P2

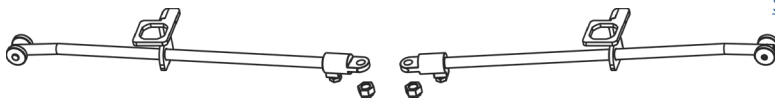


Key: SCE-K333

ENVIROLINE® 3-POINT LATCH KIT

Designed for use with all Enviroline® Series enclosures. This simple to install latch kit will add a 2 or 3-point latching system to the enclosure. The kit includes easy to cut 5/16 inch round rods with rollers and rod guides for a strong functioning latching system. No added holes or cutouts in the enclosure necessary for installation.

Catalog No.	Qty Per Kit	Product Code
SCE-3PTL	1	P2



ALUMINUM ROD KIT WITH RAMP SHOES

Catalog No.	Rod Size	Length	Qty Per Kit	Product Code
SCE-ARK36	0.375 x 0.625	36in	1	P2
SCE-ARK39	0.375 x 0.625	39in	1	P2
SCE-103370	0.25 x 0.50		1	P2



SWING HANDLES

Catalog No.	Description	Qty Per Kit	Product Code
SCE-FSH3DB	Swing Handle, 3mm Double Bit Chrome w/ Key	1	P2
SCE-FSH5DB	Swing Handle, 5mm Double Bit Chrome w/ Key	1	P2
SCE-FSH7S	Swing Handle, 7mm Square Bit Chrome w/ Key	1	P2
SCE-FSH8S	Swing Handle, 8mm Square Bit Chrome w/ Key	1	P2
SCE-FSH	Swing Handle, Padlock	1	P2
SCE-FSHC	Swing Handle, Padlock/Coin Proof	1	P2
SCE-FSHK	Swing Handle, Padlock/Key Lock (Qty. 2 Key 101)	1	P2



Key Lock Coin Proof Padlock Double Bit Square Bit

SMALL 3-POINT CAM, PLATED STEEL FOR USE WITH 5" HANDLES

Catalog No.	Qty Per Kit	Product Code
SCE-3PTSMC	1	P2



LARGE CAM FOR DOOR-HINGED ON LEFT, PLATED STEEL FOR USE WITH SCE 7" HANDLES

Catalog No.	Qty Per Kit	Product Code
SCE-102237	1	P2



KEYLOCKING DOOR LATCH FOR USE WITH NEMA-I ENCLOSURES WITH KNOCKOUTS (CAM AND KEYS INCLUDED)

Catalog No.	Qty Per Kit	Product Code
SCE-L	1	P2



DOOR HARDWARE

QUICK RELEASE CLAMP ASSEMBLY

Designed for quick access to an enclosure with standard screw clamps. Black zinc die cast with stainless steel fasteners.

Catalog No.	Enclosure Type	Thread Type	Qty Per Kit	Product Code
SCE-LPQR	"LP"	1/4-20	1	P2
SCE-ORCH	"CHNF"	10-24	1	P2



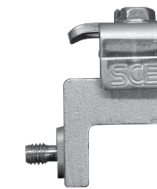
REPLACEMENT CLAMPS

Designed as replacement clamps for SCE enclosures.

Catalog No.	Enclosure Type	Thread Type	Finish	Qty Per Kit	Product Code
SCE-LPCLAMP	"LP"	1/4-20	Zinc	2	P2
SCE-LPCLAMPSS	"LP"	1/4-20	Stainless	2	P2
SCE-CHCLAMP	"CHNF"	10-24	Chrome	2	P2
SCE-CHCLAMPSS	"CHNF"	10-24	Stainless	2	P2



[SCE-LPCLAMP/SS](#)

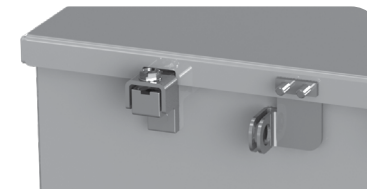


[SCE-CHCLAMP/SS](#)

PADLOCK KIT FOR JUNCTION BOXES

Designed for "CHNF" enclosures. Maintains water-tight and dust-tight seal. Made of plated steel.

Catalog No.	Qty Per Kit	Product Code
SCE-PLKJIC	1	P2



PADLOCK HASP

Designed as replacement padlock hasp for SCE enclosures.

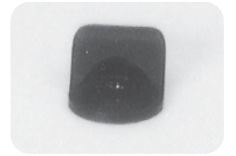
Catalog No.	Finish	Product Code
SCE-115117	Zinc	P2
SCE-128600	Stainless	P2



FINGER PULL

Designed for use as pull latch for the removable wire way.

Catalog No.	Description	Qty Per Kit	Product Code
SCE-ELFP	Black Polyamide	1	P2



PULL HANDLE

Designed for use as a handle on enclosures. Handle is a steel tube plastic coated black with black molded polyamide plastic end stays.

Catalog No.	Qty Per Kit	Size	Product Code
SCE-UHK13	1	3.15 x 13.00	P2



PULL HANDLE - 4"

Designed for use on keyboard drawers, swing-out panels, etc. Mounting hardware is included.

Catalog No.	Finish	Hole Center	Qty Per Kit	Product Code
SCE-APH	Aluminum	4.00	1	P2



HMI PULL HANDLES

Designed for use on HMI enclosures. Handle is a steel tube plastic coated black with black molded polyamide plastic end stays. Mounting hardware is included.

Catalog No.	Length	Qty Per Kit	Product Code
SCE-HMIPH5	5 in.	1	P2
SCE-AUHK	12 in.	1	P2



[SCE-HMIPH5](#)



[SCE-AUHK](#)

SCE-ARK36 Patent Pending 16/101,929